

S.E. 1/4 OF
SECTION 15, T.6N.,R.1W., S.L.B.&M.

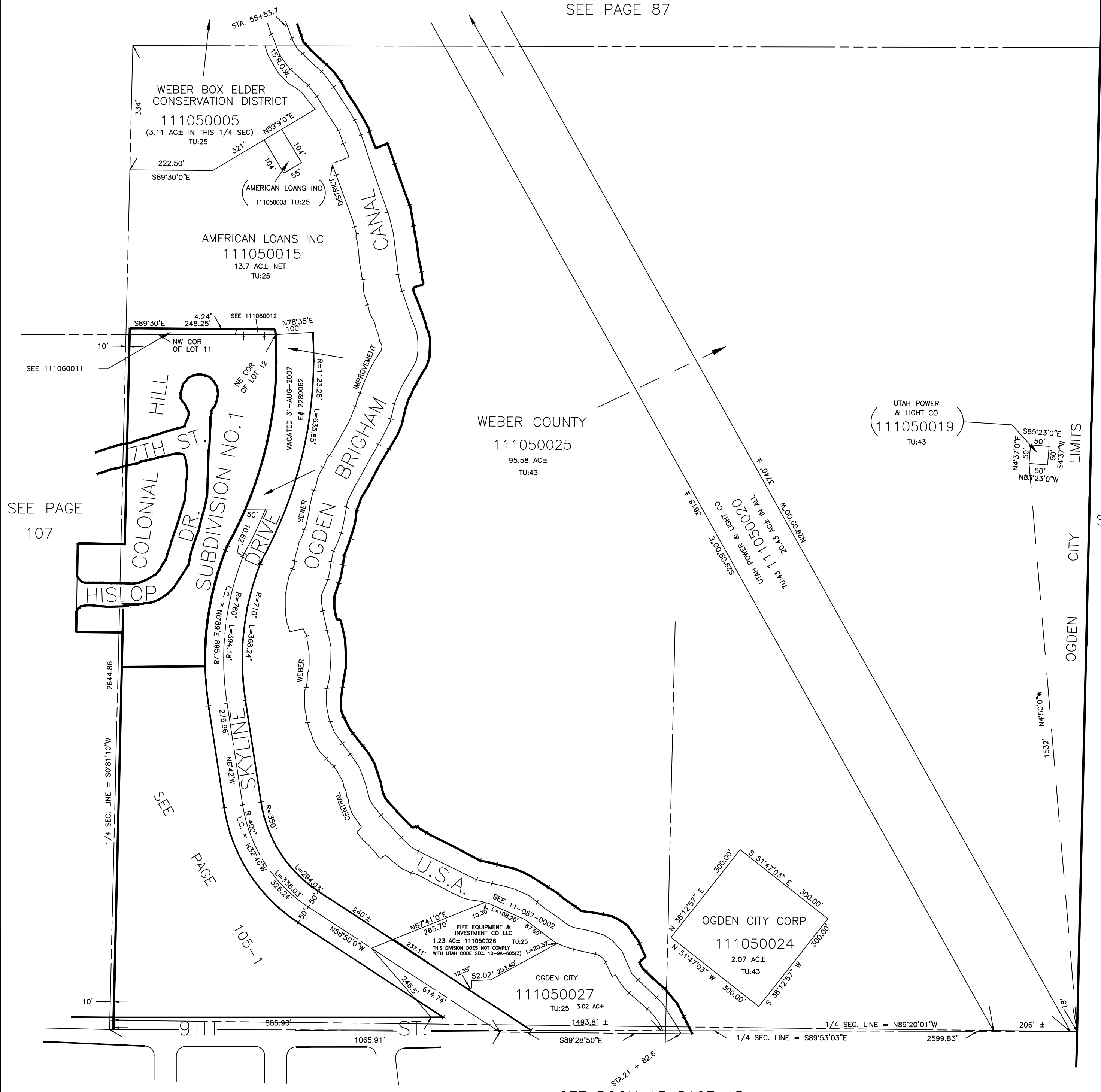
IN OGDEN CITY

SCALE 1" = 200'

ALSO SEE P.105-1

TAXING UNIT: 25,43

SEE PAGE 87



SEE PAGE 107

SEE PAGE 86

SEE BOOK 13 PAGE 45